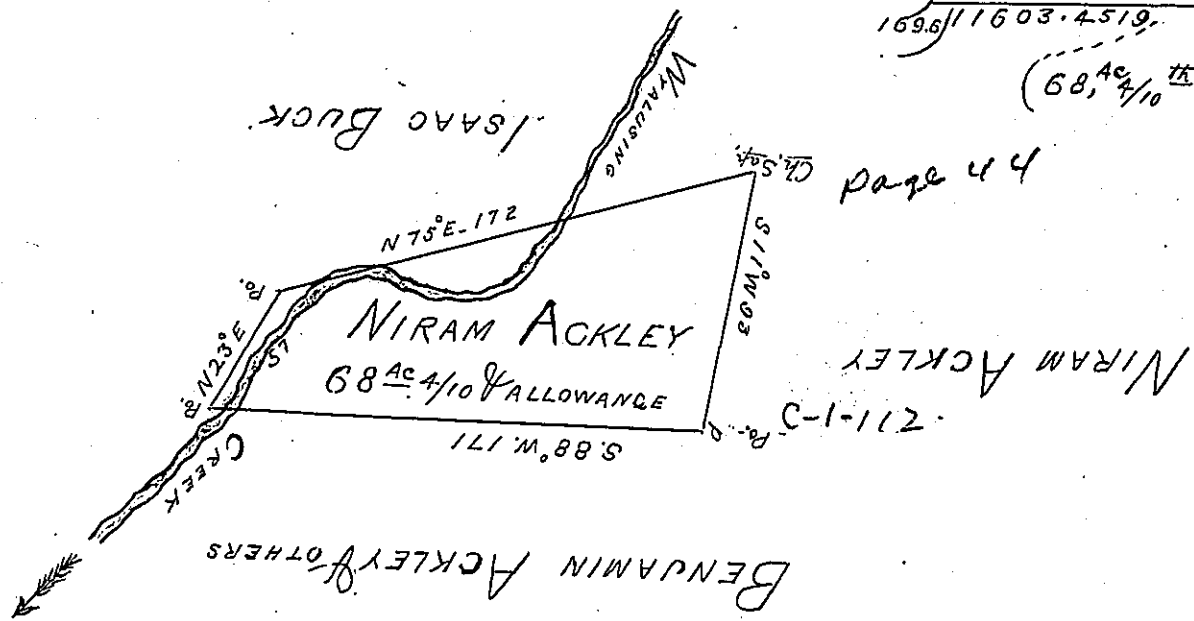


STATIONS	COURSES	DIST.	N.	S.	E.	W.	M. DISTANCE	N. AREA	S. AREA
1	S. 88° W.	171		5.95		170.84	170.84 000.00		1016.4980
2	N. 23° E.	57	52.54		22.33		22.33 44.66	1173.2182	
3	N. 75° E.	172	44.58		66.21		210.86 377.16	9410.1388	
4	S. 11° W.	93		91.17		17.69	359.37 341.68		32763.7629

10573.3570
 33780.2600
 10573.3570
 2 23206.9030
 169.6 11603.4519
 (58, ^{Ac}/₁₀ ^{th.})



Draught of a tract of land in the Township of Wyalusing and county of Bradford containing Sixty Eight acres and four tenths of an acre with the usual allowance of six percent for roads. Etc. being a tract of land certified to Benjamin Ackley who neglected to apply for the same surveyed to Niram Ackley the 24 of September 1833 in pursuance of a warrant dated May 31st 1833.

Jacob Spangler Esqr. James M. Edsall
 Surveyor General D. S.

IN TESTIMONY that the above is a copy of the original remaining on file in the Department of Internal Affairs of Pennsylvania, made conformably to an Act of Assembly approved the 16th day of February, 1833, I have hereunto set my Hand and caused the Seal of said Department to be affixed at Harrisburg, this seventeenth day of August 1903.

James B. Brown
 Secretary of Internal Affairs.